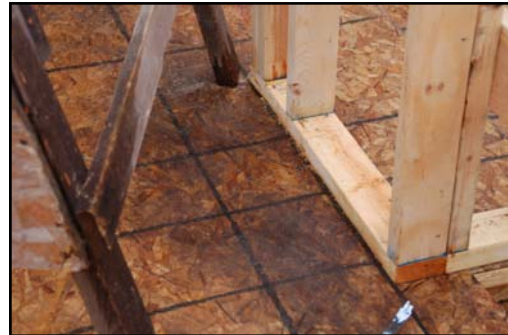




CHALLENGING CONVENTIONAL METHODS THE EVER-DRY ADVANTAGE

Lumber and sheathing are manufactured, strength rated and shipped dry. Major building codes now mandate weather-tight yard storage of raw materials and maximum allowed moisture content at time of installation. At Terrace Homes, lumber inventory is stored unwrapped in open air warehouse facilities protected from sun and rain. Prior to assembly, materials are moved indoors, acclimated to a uniform temperature, inspected, sorted then installed. This process guarantees immediate bonding to adhesives, and curing to maximum engineered strength. Unacceptable materials are culled and converted to blocking & fillers.

With conventional construction, framing materials are seldom protected and withstand numerous rain soak cycles. For example, in northern climates, wet snowfall on a recently framed structure guarantees a well soaked deck. Water trapped under wall plates and in sawdust filled cavities may never dry out. It is a fact that construction assemblies containing swelled chipboard, delaminated plywood and warped or punky framing lumber simply do not retain their rated strength.



You cannot “sugar coat” the effects of building with high moisture content materials. Besides being structurally deficient, they are prone to mold. Such practices are not acceptable, and are virtually non-existent with **Terrace Homes Pre-Engineered Ever-Dry** construction methods.